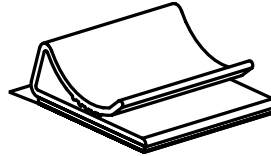
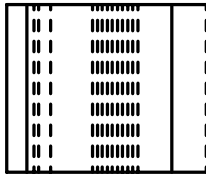
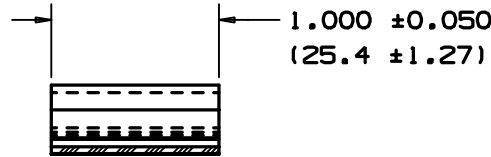
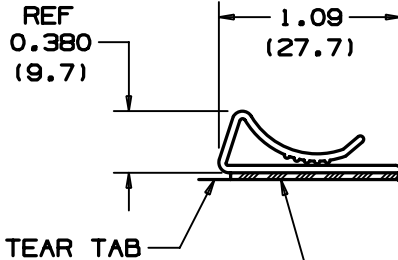


THIS COPY IS PROVIDED ON A RESTRICTED BASIS AND IS NOT TO BE USED IN ANY WAY DETRIMENTAL TO THE INTERESTS OF PANDUIT CORP.

NO WARRANTY, EXPRESSED OR IMPLIED, IS MADE BY PANDUIT WITH RESPECT TO ADHESIVE BOND PERFORMANCE, AMONG OTHER THINGS, THE CONDITIONS UNDER WHICH THESE MOUNTS MAY BE APPLIED AND/OR THE SURFACE TO WHICH THEY MAY BE APPLIED ARE BEYOND PANDUIT'S CONTROL.



* PANDUIT PART NO.	WEIGHT LBS/100 PCS. (g)
FCC-A	0.60 (274)



**TO APPLY MOUNT:**

1. REMOVE PROTECTIVE LINER.
2. PLACE IN DESIRED LOCATION.
3. APPLY PRESSURE TO TOP CENTER OF MOUNT.

**NOTES:**

- \*1. SEE CURRENT PRICE SHEET FOR PART NUMBER SUFFIX DESIGNATION FOR PACKAGE SIZE.
2. MAXIMUM FLAT CABLE STACKING HEIGHT IN CLIP IS .17(4.3).

**ADHESIVE BACKING**  
 PRESSURE SENSITIVE FOAM TAPE .040 (1.02) THICK WITH RUBBER ADHESIVE AND PROTECTIVE LINER. MOUNT IS DESIGNED TO SUPPORT .5 LB. (227g) MAXIMUM WEIGHT ON A CLEAN, DRY, SMOOTH, GREASE-FREE SURFACE.

(DIMENSIONS IN PARENTHESES ARE IN METRIC.)

CAD FILENAME/LAYER#

GB0239BD\_PB\_FCCACLIP\_03

**PANDUIT**

CORP.

TINLEY PARK, ILLINOIS

FLAT CABLE CLIP (FCC-A)

UNLESS OTHERWISE SPECIFIED, DIMENSIONAL TOLERANCES ARE:  
 (.X) ± 0.1(2.5) (.XXX) ± 0.020(.5)  
 (.XX) ± 0.025(.6) ANGLES ± 5°

UNLESS OTHERWISE SPECIFIED, ALL DIMENSIONS ARE GIVEN IN INCHES, THIRD ANGLE PROJECTION.

DRAWN BY  
SJS  
DATE  
10-7-92  
CHK'D

MAT'L:

PVC  
COLOR: GRAY

SCALE

FULL

DRAWING NO.

GB0239BD

DWG

A  
SIZE

REV	DATE	BY	CHK	DESCRIPTION	ECN	R	CUST	SUP
3	4/28/04	JAD		CUT LENGTH TOL WAS .030"	GB0239BD	3		
2	8/25/01	LGG		ADDED REF AND UPDATE FOR WEB	GB0239BD	2		
1	2-16-94	SJS		REVERSED TEAR TAB	GB0239BD	1		
R	10-7-92	SJS		INITIAL RELEASE	GB0239BD	R		