

Membrane screw connection - MG-INC-M16-S67L-PTES-LG - 1415186

Please be informed that the data shown in this PDF Document is generated from our Online Catalog. Please find the complete data in the user's documentation. Our General Terms of Use for Downloads are valid (<http://phoenixcontact.com/download>)



Membrane screw connection, Cable gland material: Polypropylene, Application: Standard, External cable diameter 4 mm ... 10 mm, Shielding: No, Connecting thread: M16, Color: lightgrey RAL 7035

The figure shows version MG-INC-M25-M67L-PTES-LG



Key Commercial Data

Packing unit	1 STK
Minimum order quantity	20 STK
Custom tariff number	39269097
Country of origin	Germany

Technical data

Dimensions

Length	15 mm
Length without connecting thread	7 mm
Connecting thread diameter	16 mm
Hexagon angular dimension GRP	32 mm
Length of the connecting thread	8 mm
External cable diameter	4 mm ... 10 mm

Ambient conditions

Degree of protection	IP66
	IP67
Ambient temperature (operation)	-40 °C ... 65 °C

General

Membrane screw connection - MG-INC-M16-S67L-PTES-LG - 1415186

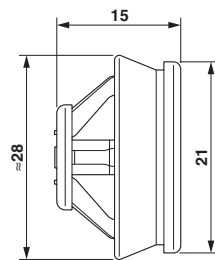
Technical data

General

Cable gland material	Polypropylene
Seal material	TPE
Shielded	No
Thread type on connection side	M16
Color	light grey RAL 7035
	lightgrey RAL 7035
Assembly instructions	for 0.8 mm ... 3.5 mm wall thickness, for 16 mm ... 16.7 mm bore hole

Drawings

Dimensional drawing



Classifications

eCl@ss

eCl@ss 5.1	27149109
eCl@ss 6.0	27149109
eCl@ss 8.0	27379216
eCl@ss 9.0	27379216

ETIM

ETIM 5.0	EC002024
----------	----------